

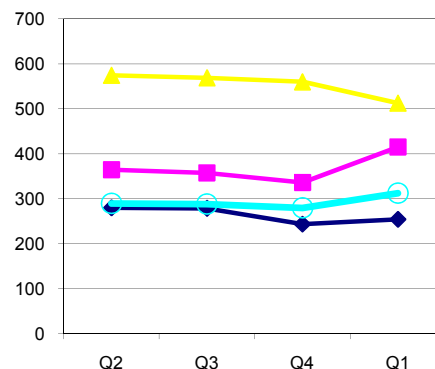
Trends in Funding for Established Posts Q2 2010/11 to Q1 2011/12

The figures below show the position over the past four quarters for WBC, joint and external funded posts. All posts (permanent or fixed term) are included in this report.

WBC funded post FTE increased by 75.07 FTE over the quarter.

	WBC Funded (incl. DSG)			
	Q2	Q3	Q4	Q1
Chief Executive	279.72	278.54	243.49	254.26
Children and Young People	364.22	357.22	335.98	414.62
Community Services	573.91	568.43	559.49	512.43
Environment	289.08	288.08	279.44	312.16
Total	1506.92	1492.27	1418.39	1493.47

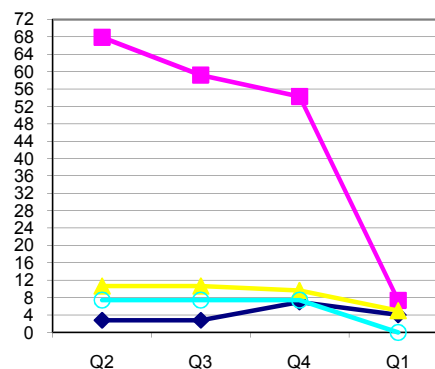
WBC Funded Established Posts



Joint funded post FTE decreased by 61.97 FTE over the quarter.

	Joint Funding			
	Q2	Q3	Q4	Q1
Chief Executive	2.76	2.76	7.00	4.00
Children and Young People	67.91	59.21	54.29	7.38
Community Services	10.65	10.65	9.65	5.00
Environment	7.41	7.41	7.41	0.00
Total	88.72	80.03	78.35	16.38

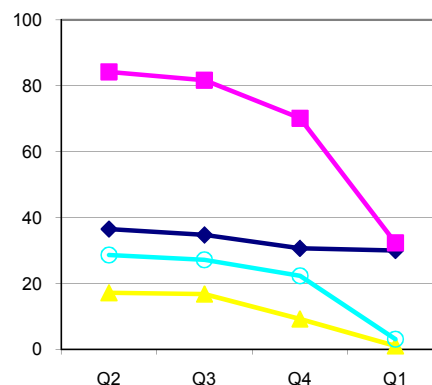
Joint Funded Established Posts



Externally funded post FTE decreased by 65.91 FTE over the quarter.

	External Funding			
	Q2	Q3	Q4	Q1
Chief Executive	36.46	34.68	30.62	29.98
Children and Young People	84.17	81.65	70.03	32.24
Community Services	17.17	16.79	9.22	1.00
Environment	28.64	27.18	22.26	3.00
Total	166.43	160.30	132.13	66.22

External Funded Established Posts



KEY

Chief Executive	diamond
Children and Young People	square
Community Services	triangle
Environment	circle